

# **Public Works Monthly Report by Department**

**Ernesto Rios Director  
of Public Works  
December 2025**



# PW Admin. Department



### **Public Works Administration Monthly Report – December**

During the month of December, the Director of Public Works met with each division within the Public Works Department to review the status and progress of ongoing projects. A kickoff meeting was also conducted to initiate the Cedar Breaks Repairs Project.

Public Works staff met with customers to address questions and concerns related to utility services. The Director of Public Works worked with GIS staff to review and verify utility cost estimates to support project planning and decision-making. Staff also assisted Development Services by participating in meetings to review potential development projects and assess infrastructure impacts.

The department continued gathering and compiling data required for submittals and updates to the Texas Water Development Board. Progress was also made on the development of a departmental Emergency Preparedness Plan to enhance operational readiness.

Additionally, staff worked on establishing a comprehensive maintenance program for city infrastructure to accurately track maintenance activities, repairs, and future upgrade needs. Public Works staff also participated in Open Records Request training to ensure compliance with public information requirements.

## WTP 3

2025	January		February		March		April		May		June		July		August		September		October		November		December		
	Raw	Finish	Raw	Finish	Raw	Finish	Raw	Finish	Raw	Finish	Raw	Finish	Raw	Finish	Raw	Finish	Raw	Finish	Raw	Finish	Raw	Finish	Raw	Finish	
1	0.661	0.687	0.845	0.866	0.849	0.833	0.645	0.609	1.189	1.169	0.894	0.888	0.946	0.966	0.993	1.047	0.948	0.912	1.203	1.217	0.944	0.859	0.000	0.000	
2	0.718	0.704	0.813	0.783	0.947	0.948	0.919	0.936	1.159	1.092	0.925	0.908	0.873	0.863	1.048	1.147	0.917	0.962	1.114	1.002	0.769	0.771	0.922	0.871	
3	0.682	0.681	0.737	0.755	0.933	0.874	0.905	0.891	0.968	1.001	1.245	1.175	0.755	0.752	1.228	1.353	1.102	0.990	1.098	1.093	0.849	0.764	0.842	0.826	
4	0.686	0.682	0.760	0.738	0.734	0.761	0.878	0.833	1.194	1.183	0.625	0.669	0.689	0.660	1.253	1.144	1.202	1.188	1.316	1.278	0.925	0.953	0.778	0.714	
5	0.739	0.674	0.842	0.790	0.878	0.923	0.885	0.946	0.705	0.695	1.224	1.164	0.810	0.789	0.793	0.835	1.019	1.106	1.157	1.116	0.808	0.784	0.693	0.680	
6	0.724	0.704	0.691	0.766	0.860	0.824	0.904	0.857	0.767	0.714	0.959	1.002	0.906	0.901	1.053	0.991	1.146	1.158	0.979	0.954	0.879	0.817	0.844	0.827	
7	0.586	0.645	0.758	0.751	0.933	0.858	0.928	0.865	0.661	0.647	1.353	1.330	0.763	0.763	1.317	1.229	1.200	1.099	1.075	1.068	0.790	0.785	0.824	0.795	
8	0.711	0.751	0.908	0.900	0.724	0.764	0.949	0.956	0.648	0.778	1.343	1.327	0.560	0.629	1.093	1.031	0.611	0.638	1.224	1.192	1.078	1.012	0.676	0.657	
9	0.558	0.644	0.667	0.637	0.859	0.845	0.966	0.953	0.910	0.750	1.465	0.954	0.745	0.710	1.241	1.031	0.592	1.056	1.050	0.865	0.848	0.762	0.725		
10	0.648	0.669	0.848	0.838	0.932	1.131	0.937	1.131	1.276	1.131	0.937	1.403	1.099	0.891	1.044	1.133	1.045	1.049	1.107	1.044	0.730	0.710	0.702	0.711	
11	0.721	0.716	0.627	0.622	0.661	0.665	1.038	1.042	0.823	0.793	0.628	0.617	0.900	0.847	1.128	1.030	1.257	1.214	1.180	1.166	0.808	0.803	0.728	0.693	
12	0.895	0.557	0.656	0.619	0.897	0.835	1.073	1.059	0.840	0.868	0.775	0.741	0.860	0.893	1.153	1.143	1.087	1.126	1.171	1.091	0.978	0.947	0.801	0.751	
13	0.781	0.736	0.747	0.792	0.983	1.020	1.167	1.150	0.865	0.846	0.809	0.768	0.630	0.625	1.175	1.122	1.267	1.130	0.980	1.000	0.877	0.821	1.025	0.929	
14	0.923	0.953	0.696	0.625	1.031	0.967	0.999	1.011	0.807	0.793	1.104	1.119	0.657	0.670	1.016	0.966	1.114	1.072	1.082	0.992	0.808	0.861	0.898	0.836	
15	1.014	0.938	0.572	0.613	0.978	0.971	0.999	0.990	1.030	0.993	0.774	0.752	0.681	0.574	1.140	1.109	1.037	1.037	1.093	1.118	0.994	0.965	0.719	0.685	
16	0.760	0.792	1.015	1.006	1.010	0.996	1.441	1.425	1.243	1.240	0.757	0.728	0.712	0.634	1.070	1.088	1.092	1.140	1.139	1.020	1.046	0.923	0.794	0.759	
17	0.710	0.728	0.838	0.890	0.903	0.914	1.155	1.130	1.180	1.183	0.681	0.729	0.712	0.940	1.493	1.408	1.136	1.024	1.059	1.085	0.754	0.769	0.716	0.677	
18	0.799	0.770	1.030	1.022	0.941	0.954	1.224	1.241	1.086	1.006	0.819	0.747	0.894	0.835	0.880	0.782	1.137	1.029	1.279	1.224	0.914	0.859	0.733	0.710	
19	0.984	0.975	1.252	1.236	1.073	1.061	1.372	1.274	0.921	0.826	1.033	0.949	0.991	1.005	1.101	1.081	1.078	1.102	1.197	1.137	0.828	0.836	0.728	0.682	
20	0.652	0.604	0.863	0.769	1.235	1.243	1.235	1.184	1.000	1.073	1.213	1.118	0.924	0.899	0.693	0.678	1.153	1.204	1.007	1.005	0.720	0.695	0.876	0.838	
21	0.892	0.939	0.859	0.868	1.059	0.996	1.212	1.181	1.225	1.201	0.872	0.925	0.850	0.824	1.106	1.041	1.296	1.148	1.040	0.963	0.781	0.687	0.848	0.820	
22	0.848	0.794	0.900	0.885	1.241	1.261	1.320	1.322	1.274	1.250	0.989	1.125	0.814	0.807	1.029	1.066	1.018	1.011	1.138	1.155	0.833	0.863	0.714	0.668	
23	0.722	0.720	0.729	0.788	0.725	0.672	0.900	0.892	0.944	0.927	1.101	0.909	1.070	1.003	1.118	1.085	0.977	0.953	1.035	0.929	0.834	0.765	0.697	0.676	
24	0.916	0.773	0.735	0.728	0.964	1.007	1.202	1.184	1.567	1.535	0.969	0.971	0.940	0.962	1.040	0.962	1.048	1.288	1.184	0.846	0.841	0.731	0.697	0.810	0.780
25	0.769	1.190	0.831	0.802	1.046	1.009	1.139	1.138	1.049	1.045	0.948	0.979	1.001	0.993	0.867	0.794	0.929	0.848	0.882	0.923	0.728	0.730	0.818	0.758	
26	0.618	0.251	0.778	0.715	0.989	0.983	0.778	0.735	0.778	0.727	1.057	1.118	1.058	0.930	1.014	1.057	0.858	0.931	0.904	0.855	0.718	0.709	0.718	0.709	
27	0.797	0.717	0.757	0.721	0.898	0.861	0.864	0.783	0.969	0.992	0.937	1.001	1.066	1.016	1.001	0.998	1.267	1.183	0.829	0.727	0.679	0.736	0.937	0.872	
28	0.934	0.815	0.829	0.882	0.884	0.917	1.193	1.213	0.653	0.606	0.725	1.669	0.695	0.689	1.100	1.000	1.156	1.203	0.778	0.807	1.058	0.948	0.881	0.839	
29	0.596	0.640			1.026	1.000	1.228	1.197	0.725	0.711	0.845	0.861	0.955	0.937	1.133	1.151	1.190	1.050	1.049	0.961	0.886	0.850	0.675	0.628	
30	0.840	0.898			1.111	1.098	1.089	1.080	1.673	0.690	0.946	0.966	1.110	1.127	1.322	1.207	0.875	0.785	0.824	0.797	0.000	0.000	0.808	0.788	
31	0.614	0.550			1.119	1.174			0.859	0.835			0.900	0.823	0.922	0.903			0.760	0.796			0.846	0.789	
Total	23.526	22.997	22.635	22.477	27.866	29.430	32.385	31.808	29.639	29.103	30.483	29.495	26.442	26.086	33.784	32.810	32.570	31.656	32.601	31.608	24.797	23.914	23.908	22.716	
Min	0.558	0.251	0.572	0.613	0.661	0.663	0.645	0.609	0.648	0.606	0.625	0.617	0.56	0.574	0.693	0.678	0.611	0.638	0.76	0.727	0.000	0	0.000	0	
Max	1.014	1.19	1.252	1.236	1.241	1.261	1.441	1.425	1.567	1.535	1.725	1.669	1.223	1.127	1.493	1.408	1.296	1.214	1.316	1.278	1.078	1.012	1.025	0.929	
Average	0.759	0.742	0.808	0.803	0.961	0.949	1.080	1.060	0.956	0.939	1.016	0.983	0.853	0.841	1.090	1.058	1.086	1.055	1.052	1.020	0.827	0.797	0.771	0.733	

# CITY OF LAGO VISTA WATER & WASTEWATER REPORT

December 2025



## Water Production

This Month		Total Production - 14.862 MG				
	Raw Water	Production	Efficiency	Highest Day	Average Day	Lowest Day
Water Plant 1	14.602 MG	14.862 MG	101.8%	1.037 MG	0.479 MG	0.347 MG
Water Plant 2	0.000 MG	0.000 MG	∞%	--- MG	0.000 MG	--- MG
Water Plant 3	0.000 MG	0.000 MG	∞%	0.000 MG	0.000 MG	0.000 MG
Combined	14.602 MG	14.862 MG	101.8%	1.037 MG	0.479 MG	0.347 MG

Past 12 Months		Total Production - 496.017 MG				
	Raw Water	Production	Efficiency	Highest Day	Average Day	Lowest Day
Water Plant 1	207.023 MG	186.977 MG	90.3%	1.076 MG	0.514 MG	0.091 MG
Water Plant 2	0.000 MG	0.000 MG	∞%	--- MG	0.000 MG	--- MG
Water Plant 3	170.441 MG	309.040 MG	181.3%	1.355 MG	0.849 MG	0.000 MG
Combined	377.464 MG	496.017 MG	131.4%	2.092 MG	1.363 MG	0.347 MG

## Waste Water Treatment

This Month		Total Treated - 15.498 MG			
	Treated	Highest Day	Average Day	Lowest Day	
Waste Water Treatment Plant	15.498 MG	0.570 MG	0.500 MG	0.430 MG	

Past 12 Months		Total Treated - 219.388 MG			
	Treated	Highest Day	Average Day	Lowest Day	
Waste Water Treatment Plant	219.388 MG	1.139 MG	0.603 MG	0.200 MG	

## Effluent Disposal

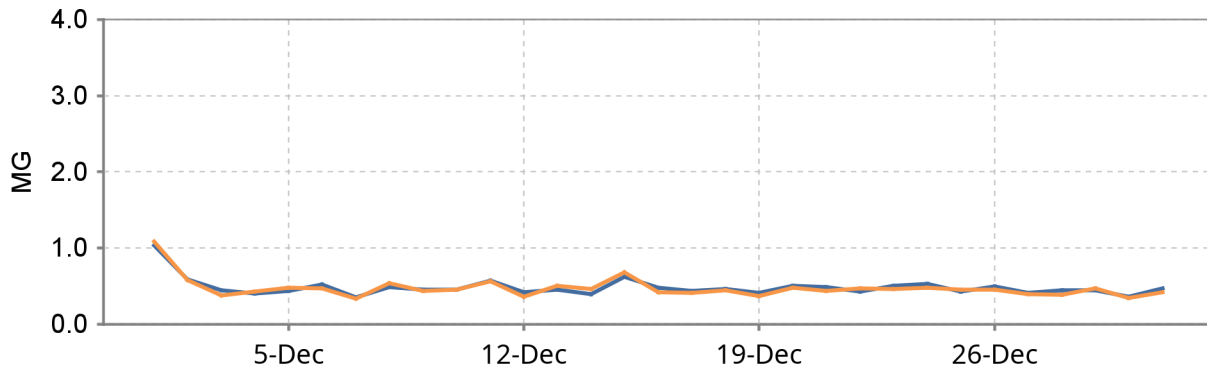
This Month		WWTP Plant Permit Total - 15.502 MG			
	Total	Highest Day	Average Day	Lowest Day	
Lago Vista Golf Course Permit	5.345 MG	0.283 MG	0.172 MG	0.055 MG	
Cedar Breaks Permit	24.348 MG	1.177 MG	0.785 MG	0.000 MG	
WWTP Plant Permit Total	15.502 MG	0.570 MG	0.500 MG	0.430 MG	
Reclaimed Effluent 210A Permit	0.000 MG	0.000 MG	0.000 MG	0.000 MG	

Past 12 Months		WWTP Plant Permit Total - 219.388 MG			
	Total	Highest Day	Average Day	Lowest Day	
Lago Vista Golf Course Permit	32.009 MG	0.283 MG	0.088 MG	0.000 MG	
Cedar Breaks Permit	255.027 MG	1.706 MG	0.701 MG	0.000 MG	
WWTP Plant Permit Total	219.388 MG	1.153 MG	0.603 MG	0.200 MG	
Reclaimed Effluent 210A Permit	0.000 MG	0.000 MG	0.000 MG	0.000 MG	

## Combined Water Production

This Month

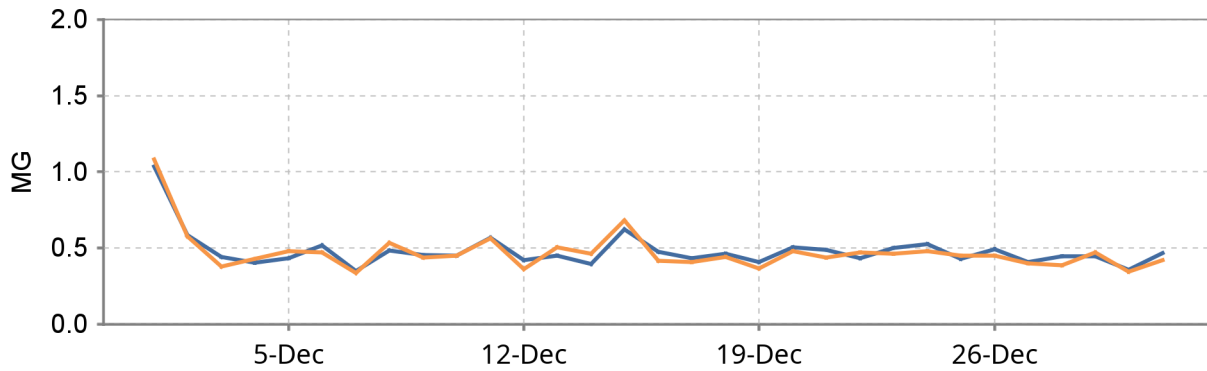


Date	WP1 Raw	WP2 Raw	WP3 Raw	Combined Raw	WP1 Finished	WP2 Finished	WP3 Finished	Combined Finished
12/01/25	1.081	---	0.000	1.081	1.037	---	0.000	1.037
12/02/25	0.574	---	0.000	0.574	0.585	---	0.000	0.585
12/03/25	0.377	---	0.000	0.377	0.440	---	0.000	0.440
12/04/25	0.427	---	0.000	0.427	0.401	---	0.000	0.401
12/05/25	0.480	---	0.000	0.480	0.433	---	0.000	0.433
12/06/25	0.469	---	0.000	0.469	0.515	---	0.000	0.515
12/07/25	0.334	---	0.000	0.334	0.347	---	0.000	0.347
12/08/25	0.532	---	0.000	0.532	0.484	---	0.000	0.484
12/09/25	0.438	---	0.000	0.438	0.454	---	0.000	0.454
12/10/25	0.450	---	0.000	0.450	0.449	---	0.000	0.449
12/11/25	0.562	---	0.000	0.562	0.568	---	0.000	0.568
12/12/25	0.363	---	0.000	0.363	0.421	---	0.000	0.421
12/13/25	0.503	---	0.000	0.503	0.448	---	0.000	0.448
12/14/25	0.460	---	0.000	0.460	0.395	---	0.000	0.395
12/15/25	0.681	---	0.000	0.681	0.622	---	0.000	0.622
12/16/25	0.416	---	0.000	0.416	0.476	---	0.000	0.476
12/17/25	0.408	---	0.000	0.408	0.432	---	0.000	0.432
12/18/25	0.440	---	0.000	0.440	0.463	---	0.000	0.463
12/19/25	0.366	---	0.000	0.366	0.409	---	0.000	0.409
12/20/25	0.480	---	0.000	0.480	0.503	---	0.000	0.503
12/21/25	0.439	---	0.000	0.439	0.486	---	0.000	0.486
12/22/25	0.470	---	0.000	0.470	0.431	---	0.000	0.431
12/23/25	0.460	---	0.000	0.460	0.500	---	0.000	0.500
12/24/25	0.480	---	0.000	0.480	0.524	---	0.000	0.524
12/25/25	0.449	---	0.000	0.449	0.427	---	0.000	0.427
12/26/25	0.449	---	0.000	0.449	0.490	---	0.000	0.490
12/27/25	0.397	---	0.000	0.397	0.406	---	0.000	0.406
12/28/25	0.387	---	0.000	0.387	0.444	---	0.000	0.444
12/29/25	0.469	---	0.000	0.469	0.447	---	0.000	0.447
12/30/25	0.343	---	0.000	0.343	0.357	---	0.000	0.357
12/31/25	0.419	---	0.000	0.419	0.466	---	0.000	0.466
Total (MG)	14.602	0.000	0.000	14.602	14.862	0.000	0.000	14.862
Highest	1.081	---	0.000	1.081	1.037	---	0.000	1.037
Average	0.471	0.000	0.000	0.471	0.479	0.000	0.000	0.479
Lowest	0.334	---	0.000	0.334	0.347	---	0.000	0.347

December 2025

## Water Plant 1 Water Production

This Month

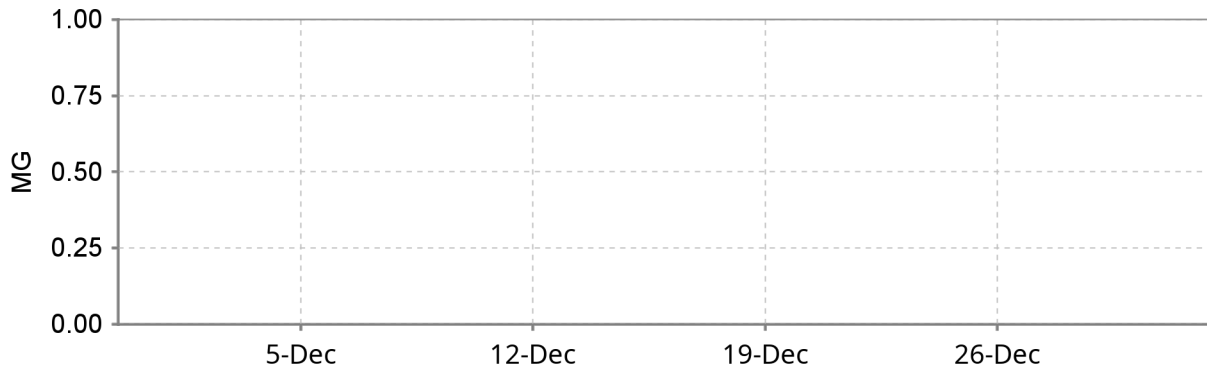


Date	WP1 Raw	WP1 Clarifier A	WP1 Clarifier B	WP1 Finished	WP1 Process Loss	WP1 Efficiency
12/01/25	1.081	0.857	0.212	1.037	0.044	96%
12/02/25	0.574	0.479	0.111	0.585	-0.010	102%
12/03/25	0.377	0.296	0.070	0.440	-0.064	117%
12/04/25	0.427	0.357	0.081	0.401	0.026	94%
12/05/25	0.480	0.388	0.091	0.433	0.046	90%
12/06/25	0.469	0.367	0.091	0.515	-0.046	110%
12/07/25	0.334	0.277	0.060	0.347	-0.013	104%
12/08/25	0.532	0.429	0.111	0.484	0.048	91%
12/09/25	0.438	0.356	0.071	0.454	-0.016	104%
12/10/25	0.450	0.349	0.101	0.449	0.001	100%
12/11/25	0.562	0.439	0.111	0.568	-0.006	101%
12/12/25	0.363	0.296	0.070	0.421	-0.058	116%
12/13/25	0.503	0.397	0.101	0.448	0.055	89%
12/14/25	0.460	0.368	0.101	0.395	0.065	86%
12/15/25	0.681	0.551	0.131	0.622	0.059	91%
12/16/25	0.416	0.326	0.080	0.476	-0.060	114%
12/17/25	0.408	0.326	0.090	0.432	-0.024	106%
12/18/25	0.440	0.349	0.080	0.463	-0.024	105%
12/19/25	0.366	0.307	0.070	0.409	-0.043	112%
12/20/25	0.480	0.378	0.101	0.503	-0.023	105%
12/21/25	0.439	0.358	0.081	0.486	-0.048	111%
12/22/25	0.470	0.377	0.091	0.431	0.040	92%
12/23/25	0.460	0.367	0.091	0.500	-0.040	109%
12/24/25	0.480	0.389	0.091	0.524	-0.045	109%
12/25/25	0.449	0.361	0.091	0.427	0.022	95%
12/26/25	0.449	0.357	0.090	0.490	-0.041	109%
12/27/25	0.397	0.327	0.080	0.406	-0.009	102%
12/28/25	0.387	0.306	0.070	0.444	-0.057	115%
12/29/25	0.469	0.377	0.101	0.447	0.022	95%
12/30/25	0.343	0.265	0.070	0.357	-0.014	104%
12/31/25	0.419	0.341	0.077	0.466	-0.047	111%
Total (MG)	14.602	11.720	2.865	14.862	-0.260	-
Highest	1.081	0.857	0.212	1.037	-	-
Average	0.471	0.378	0.092	0.479	-	102%
Lowest	0.334	0.265	0.060	0.347	-	-

December 2025

## Water Plant 2 Water Production

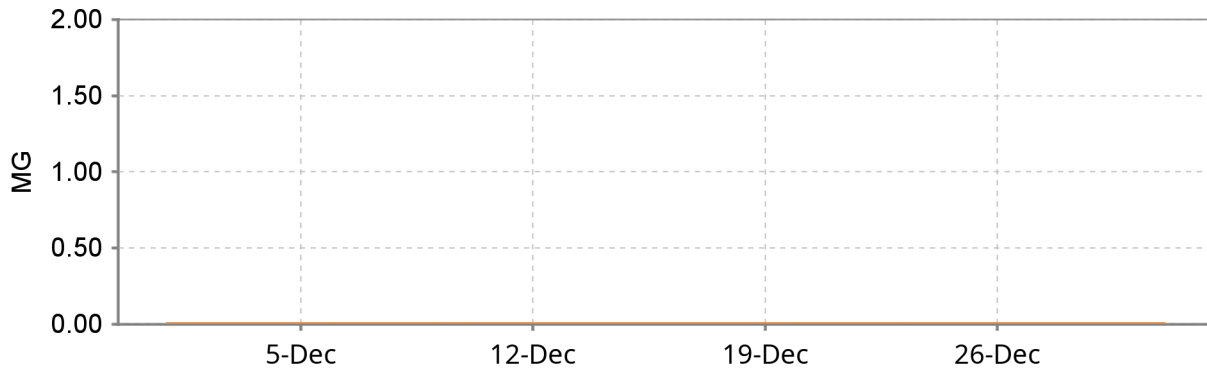
This Month



Date	WP2 Raw	To Lohmans	To Golfball	From Golfball	WP2 Finished	WP2 Process Loss	WP2 Efficiency
12/01/25	---	---	---	---	---	---	---%
12/02/25	---	---	---	---	---	---	---%
12/03/25	---	---	---	---	---	---	---%
12/04/25	---	---	---	---	---	---	---%
12/05/25	---	---	---	---	---	---	---%
12/06/25	---	---	---	---	---	---	---%
12/07/25	---	---	---	---	---	---	---%
12/08/25	---	---	---	---	---	---	---%
12/09/25	---	---	---	---	---	---	---%
12/10/25	---	---	---	---	---	---	---%
12/11/25	---	---	---	---	---	---	---%
12/12/25	---	---	---	---	---	---	---%
12/13/25	---	---	---	---	---	---	---%
12/14/25	---	---	---	---	---	---	---%
12/15/25	---	---	---	---	---	---	---%
12/16/25	---	---	---	---	---	---	---%
12/17/25	---	---	---	---	---	---	---%
12/18/25	---	---	---	---	---	---	---%
12/19/25	---	---	---	---	---	---	---%
12/20/25	---	---	---	---	---	---	---%
12/21/25	---	---	---	---	---	---	---%
12/22/25	---	---	---	---	---	---	---%
12/23/25	---	---	---	---	---	---	---%
12/24/25	---	---	---	---	---	---	---%
12/25/25	---	---	---	---	---	---	---%
12/26/25	---	---	---	---	---	---	---%
12/27/25	---	---	---	---	---	---	---%
12/28/25	---	---	---	---	---	---	---%
12/29/25	---	---	---	---	---	---	---%
12/30/25	---	---	---	---	---	---	---%
12/31/25	---	---	---	---	---	---	---%
Total (MG)	0.000	0.000	0.000	0.000	0.000	0.000	-
Highest	---	---	---	---	---	-	-
Average	0.000	0.000	0.000	0.000	0.000	-	∞%
Lowest	---	---	---	---	---	-	-

## Water Plant 3 Water Production

This Month

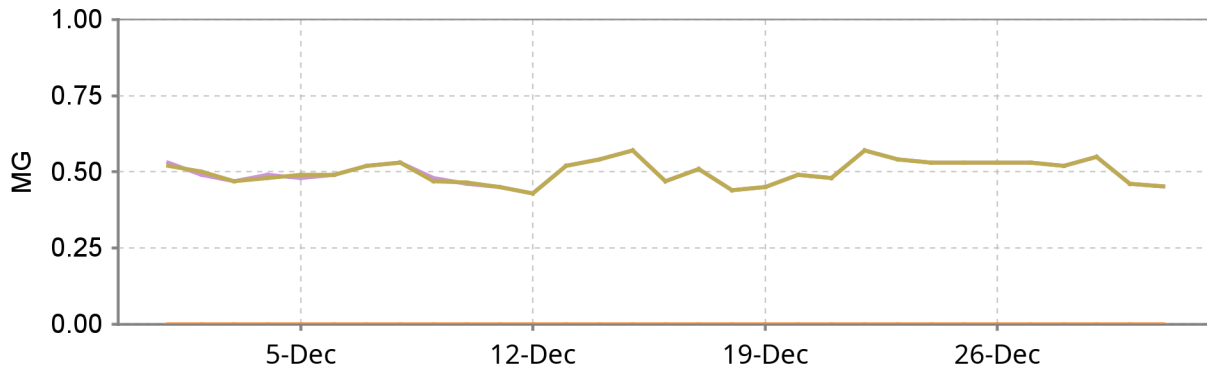


Date	WP3 Raw	WP3 Unit 1	WP3 Decant	WP3 Backwash	WP3 Finished	WP3 Process Loss	WP3 Efficiency
12/01/25	0.000	0.246	0.000	0.000	0.000	0.000	∞%
12/02/25	0.000	0.922	0.010	0.033	0.000	0.000	∞%
12/03/25	0.000	0.842	0.081	0.008	0.000	0.000	∞%
12/04/25	0.000	0.778	0.103	0.055	0.000	0.000	∞%
12/05/25	0.000	0.693	0.020	0.000	0.000	0.000	∞%
12/06/25	0.000	0.854	0.062	0.041	0.000	0.000	∞%
12/07/25	0.000	0.815	0.031	0.000	0.000	0.000	∞%
12/08/25	0.000	0.676	0.113	0.000	0.000	0.000	∞%
12/09/25	0.000	0.762	0.062	0.036	0.000	0.000	∞%
12/10/25	0.000	0.789	0.066	0.005	0.000	0.000	∞%
12/11/25	0.000	0.728	0.031	0.053	0.000	0.000	∞%
12/12/25	0.000	0.801	0.062	0.104	0.000	0.000	∞%
12/13/25	0.000	1.027	0.237	0.035	0.000	0.000	∞%
12/14/25	0.000	0.896	0.205	0.057	0.000	0.000	∞%
12/15/25	0.000	0.720	0.051	0.006	0.000	0.000	∞%
12/16/25	0.000	0.793	0.083	0.041	0.000	0.000	∞%
12/17/25	0.000	0.716	0.052	0.001	0.000	0.000	∞%
12/18/25	0.000	0.733	0.072	0.051	0.000	0.000	∞%
12/19/25	0.000	0.728	0.052	0.004	0.000	0.000	∞%
12/20/25	0.000	0.876	0.082	0.037	0.000	0.000	∞%
12/21/25	0.000	0.848	0.094	0.057	0.000	0.000	∞%
12/22/25	0.000	0.714	0.042	0.004	0.000	0.000	∞%
12/23/25	0.000	0.697	0.042	0.037	0.000	0.000	∞%
12/24/25	0.000	0.818	0.051	0.005	0.000	0.000	∞%
12/25/25	0.000	0.812	0.062	0.051	0.000	0.000	∞%
12/26/25	0.000	0.724	0.082	0.004	0.000	0.000	∞%
12/27/25	0.000	0.937	0.073	0.033	0.000	0.000	∞%
12/28/25	0.000	0.882	0.073	0.008	0.000	0.000	∞%
12/29/25	0.000	0.673	0.114	0.053	0.000	0.000	∞%
12/30/25	0.000	0.808	0.025	0.002	0.000	0.000	∞%
12/31/25	0.000	0.846	0.082	0.034	0.000	0.000	∞%
Total (MG)	0.000	24.155	2.214	0.854	0.000	0.000	-
Highest	0.000	1.027	0.237	0.104	0.000	-	-
Average	0.000	0.779	0.071	0.028	0.000	-	∞%
Lowest	0.000	0.246	0.000	0.000	0.000	-	-

December 2025

## Waste Water Treatment

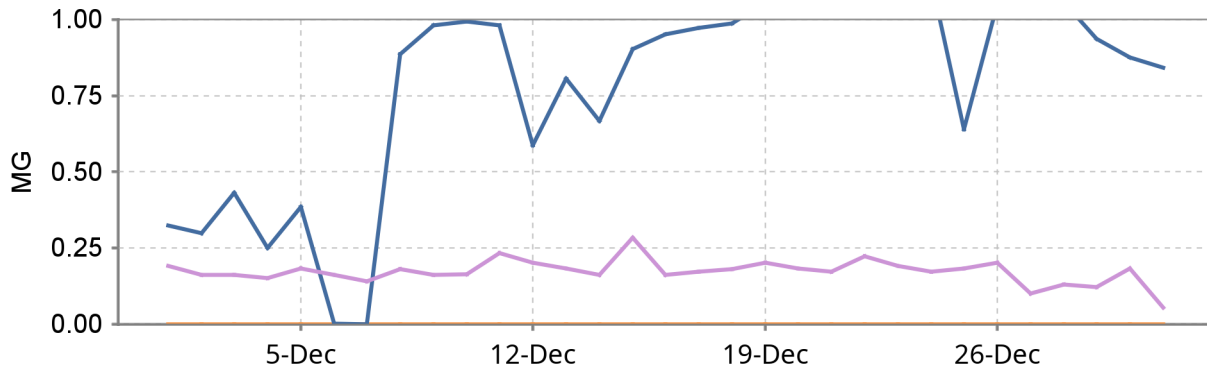
This Month



Date	WWTP Treated	LVGC Permit	Cedar Breaks Permit	WWTP Permit	Reclaimed Effluent 210A Permit
12/01/25	0.520	0.192	0.323	0.530	0.000
12/02/25	0.500	0.162	0.298	0.490	0.000
12/03/25	0.470	0.161	0.431	0.470	0.000
12/04/25	0.480	0.151	0.251	0.490	0.000
12/05/25	0.490	0.182	0.386	0.480	0.000
12/06/25	0.490	0.161	0.000	0.490	0.000
12/07/25	0.520	0.141	0.000	0.520	0.000
12/08/25	0.530	0.181	0.886	0.530	0.000
12/09/25	0.470	0.162	0.982	0.480	0.000
12/10/25	0.466	0.163	0.995	0.460	0.000
12/11/25	0.450	0.232	0.981	0.450	0.000
12/12/25	0.430	0.202	0.588	0.430	0.000
12/13/25	0.520	0.182	0.807	0.520	0.000
12/14/25	0.540	0.162	0.667	0.540	0.000
12/15/25	0.570	0.283	0.904	0.570	0.000
12/16/25	0.470	0.161	0.952	0.470	0.000
12/17/25	0.510	0.172	0.972	0.510	0.000
12/18/25	0.440	0.181	0.987	0.440	0.000
12/19/25	0.450	0.202	1.055	0.450	0.000
12/20/25	0.490	0.182	1.035	0.490	0.000
12/21/25	0.480	0.171	1.028	0.480	0.000
12/22/25	0.570	0.223	1.046	0.570	0.000
12/23/25	0.540	0.192	1.177	0.540	0.000
12/24/25	0.530	0.171	1.129	0.530	0.000
12/25/25	0.530	0.182	0.640	0.530	0.000
12/26/25	0.530	0.202	1.050	0.530	0.000
12/27/25	0.530	0.100	1.068	0.530	0.000
12/28/25	0.520	0.131	1.056	0.520	0.000
12/29/25	0.550	0.121	0.937	0.550	0.000
12/30/25	0.460	0.182	0.876	0.460	0.000
12/31/25	0.452	0.055	0.843	0.452	0.000
Total (MG)	15.498	5.345	24.348	15.502	0.000
Highest	0.570	0.283	1.177	0.570	0.000
Average	0.500	0.172	0.785	0.500	0.000
Lowest	0.430	0.055	0.000	0.430	0.000

## Effluent Disposal

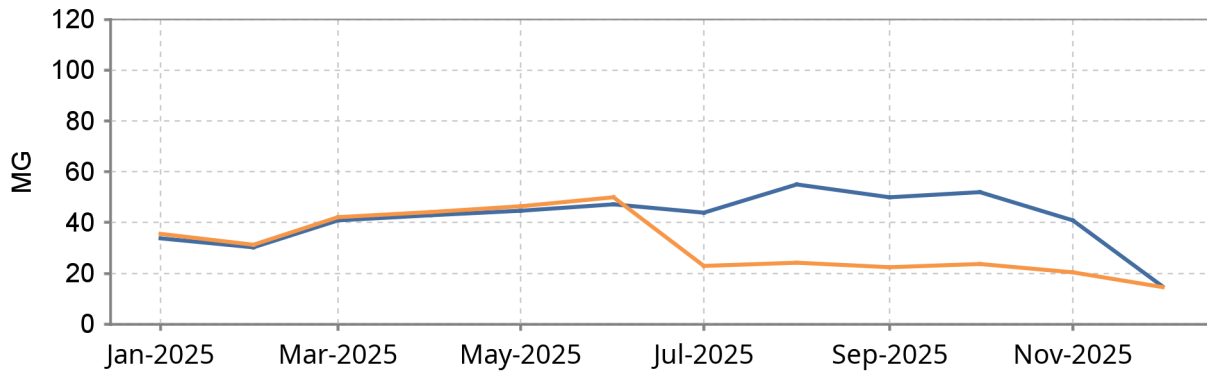
This Month



Date	LVGC Usage	LVGC Permit	Cedar Brks. Usage	Cedar Brks. Permit	HLGC Usage	Reclaimed E 210A Permit	LVGC Lake Water	HLGC Lake Water
12/01/25	0.192	0.192	0.323	0.323	0.000	0.000	0.000	---
12/02/25	0.162	0.162	0.298	0.298	0.000	0.000	0.000	---
12/03/25	0.161	0.161	0.431	0.431	0.000	0.000	0.000	---
12/04/25	0.151	0.151	0.251	0.251	0.000	0.000	0.000	---
12/05/25	0.182	0.182	0.386	0.386	0.000	0.000	0.000	---
12/06/25	0.161	0.161	0.000	0.000	0.000	0.000	0.000	---
12/07/25	0.141	0.141	0.000	0.000	0.000	0.000	0.000	---
12/08/25	0.181	0.181	0.886	0.886	0.000	0.000	0.000	---
12/09/25	0.162	0.162	0.982	0.982	0.000	0.000	0.000	---
12/10/25	0.163	0.163	0.995	0.995	0.000	0.000	0.000	---
12/11/25	0.232	0.232	0.981	0.981	0.000	0.000	0.000	---
12/12/25	0.202	0.202	0.588	0.588	0.000	0.000	0.000	---
12/13/25	0.182	0.182	0.807	0.807	0.000	0.000	0.000	---
12/14/25	0.162	0.162	0.667	0.667	0.000	0.000	0.000	---
12/15/25	0.283	0.283	0.904	0.904	0.000	0.000	0.000	---
12/16/25	0.161	0.161	0.952	0.952	0.000	0.000	0.000	---
12/17/25	0.172	0.172	0.972	0.972	0.000	0.000	0.000	---
12/18/25	0.181	0.181	0.987	0.987	0.000	0.000	0.000	---
12/19/25	0.202	0.202	1.055	1.055	0.000	0.000	0.000	---
12/20/25	0.182	0.182	1.035	1.035	0.000	0.000	0.000	---
12/21/25	0.171	0.171	1.028	1.028	0.000	0.000	0.000	---
12/22/25	0.223	0.223	1.046	1.046	0.000	0.000	0.000	---
12/23/25	0.191	0.192	1.177	1.177	0.000	0.000	0.000	---
12/24/25	0.171	0.171	1.129	1.129	0.000	0.000	0.000	---
12/25/25	0.182	0.182	0.640	0.640	0.000	0.000	0.000	---
12/26/25	0.202	0.202	1.050	1.050	0.000	0.000	0.000	---
12/27/25	0.100	0.100	1.068	1.068	0.000	0.000	0.000	---
12/28/25	0.131	0.131	1.056	1.056	0.000	0.000	0.000	---
12/29/25	0.121	0.121	0.937	0.937	0.000	0.000	0.000	---
12/30/25	0.182	0.182	0.876	0.876	0.000	0.000	0.000	---
12/31/25	0.055	0.055	0.843	0.843	0.000	0.000	0.000	---
Total (MG)	5.345	5.345	24.348	24.348	0.000	0.000	0.000	0.000
Highest	0.283	0.283	1.177	1.177	0.000	0.000	0.000	---
Average	0.172	0.172	0.785	0.785	0.000	0.000	0.000	0.000
Lowest	0.055	0.055	0.000	0.000	0.000	0.000	0.000	---

## Combined Water Production

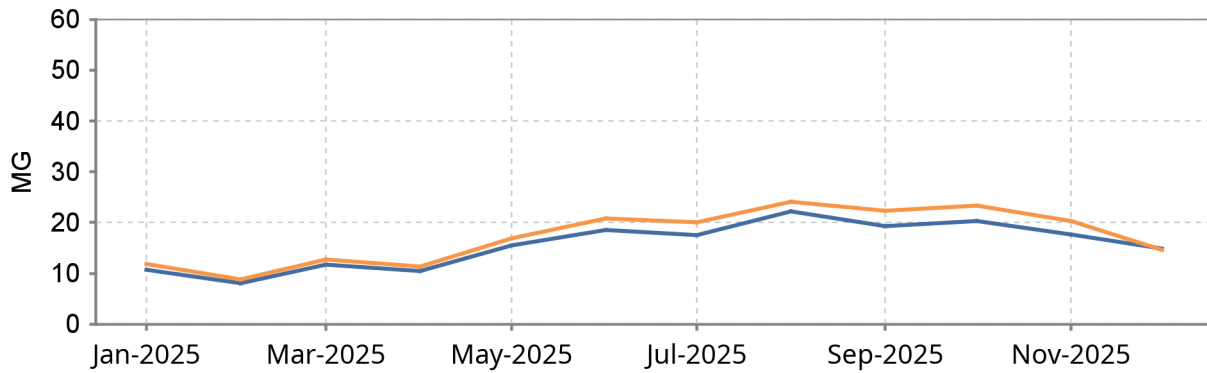
Past 12 Months



Date	WP1 Raw	WP2 Raw	WP3 Raw	Combined Raw	WP1 Finished	WP2 Finished	WP3 Finished	Combined Finished
Jan, 2025	11.775	---	23.728	35.503	10.690	---	23.098	33.788
Feb, 2025	8.754	---	22.587	31.341	7.994	---	22.296	30.290
Mar, 2025	12.710	---	29.489	42.199	11.754	---	29.025	40.779
Apr, 2025	11.366	---	32.828	44.194	10.450	---	32.365	42.815
May, 2025	16.914	---	29.624	46.538	15.540	---	29.093	44.633
Jun, 2025	20.791	---	29.157	49.948	18.580	---	28.701	47.281
Jul, 2025	20.064	---	2.761	22.825	17.582	---	26.354	43.936
Aug, 2025	24.146	---	0.000	24.146	22.213	---	32.716	54.929
Sep, 2025	22.336	---	0.000	22.336	19.269	---	30.723	49.992
Oct, 2025	23.285	---	0.267	23.551	20.351	---	31.606	51.957
Nov, 2025	20.281	---	0.000	20.281	17.692	---	23.063	40.755
Dec, 2025	14.602	---	0.000	14.602	14.862	---	0.000	14.862
Total (MG)	207.023	0.000	170.441	377.464	186.977	0.000	309.040	496.017
Highest	24.146	---	32.828	49.948	22.213	---	32.716	54.929
Average	17.252	0.000	14.203	31.455	15.581	0.000	25.753	41.335
Lowest	8.754	---	0.000	14.602	7.994	---	0.000	14.862

## Water Plant 1 Water Production

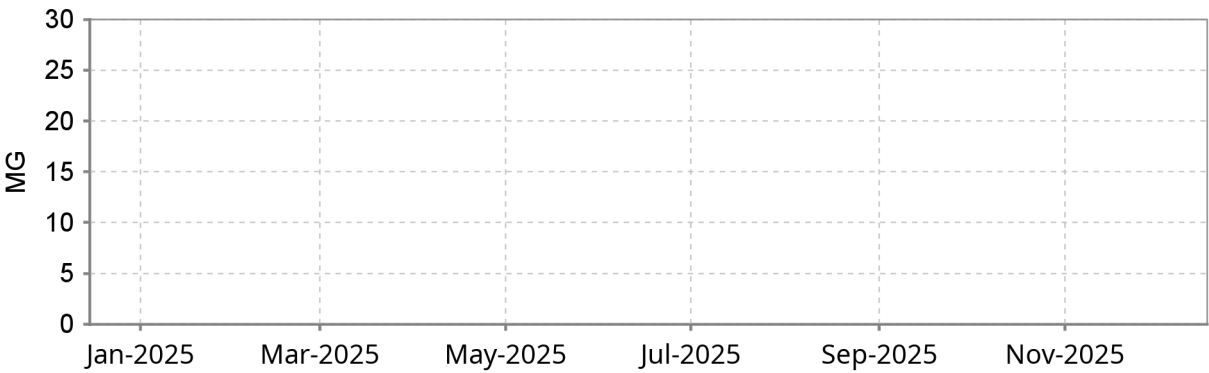
Past 12 Months



Date	WP1 Raw	WP1 Clarifier A	WP1 Clarifier B	WP1 Finished	WP1 Process Loss	WP1 Efficiency
Jan, 2025	11.775	2.509	9.264	10.690	1.085	91%
Feb, 2025	8.754	0.000	8.753	7.994	0.760	91%
Mar, 2025	12.710	0.001	12.709	11.754	0.956	92%
Apr, 2025	11.366	0.000	11.366	10.450	0.916	92%
May, 2025	16.914	0.000	16.914	15.540	1.374	92%
Jun, 2025	20.791	0.000	20.790	18.580	2.211	89%
Jul, 2025	20.064	0.895	19.170	17.582	2.482	88%
Aug, 2025	24.146	9.121	15.022	22.213	1.933	92%
Sep, 2025	22.336	12.674	9.636	19.269	3.067	86%
Oct, 2025	23.285	14.266	9.023	20.351	2.933	87%
Nov, 2025	20.281	15.311	4.976	17.692	2.589	87%
Dec, 2025	14.602	11.720	2.865	14.862	-0.260	102%
Total (MG)	207.023	66.498	140.489	186.977	20.046	-
Highest	24.146	15.311	20.790	22.213	-	-
Average	17.252	5.541	11.707	15.581	-	90%
Lowest	8.754	0.000	2.865	7.994	-	-

Water Plant 2 Water Production

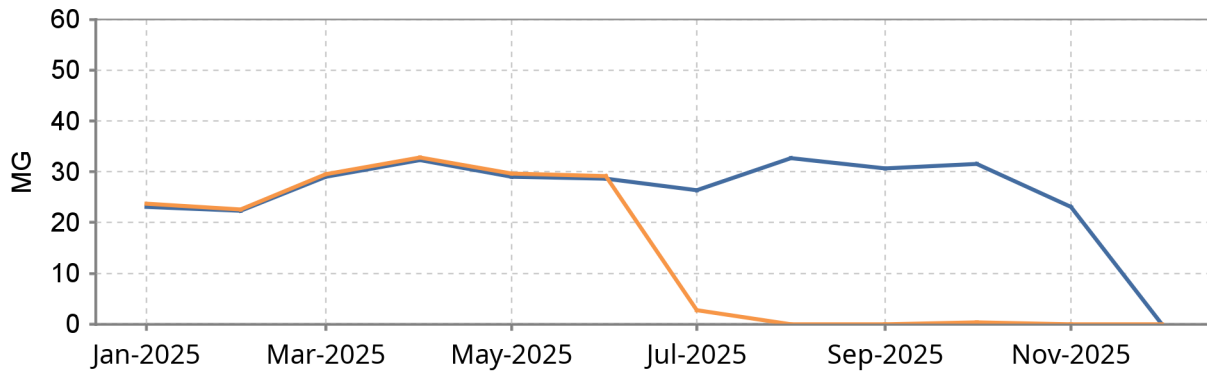
Past 12 Months



Date	WP2 Raw	To Lohmans	To Golfball	From Golfball	WP2 Finished	WP2 Process Loss	WP2 Efficiency
Jan, 2025	---	---	---	---	---	---	---%
Feb, 2025	---	---	---	---	---	---	---%
Mar, 2025	---	---	---	---	---	---	---%
Apr, 2025	---	---	---	---	---	---	---%
May, 2025	---	---	---	---	---	---	---%
Jun, 2025	---	---	---	---	---	---	---%
Jul, 2025	---	---	---	---	---	---	---%
Aug, 2025	---	---	---	---	---	---	---%
Sep, 2025	---	---	---	---	---	---	---%
Oct, 2025	---	---	---	---	---	---	---%
Nov, 2025	---	---	---	---	---	---	---%
Dec, 2025	---	---	---	---	---	---	---%
Total (MG)	0.000	0.000	0.000	0.000	0.000	0.000	-
Highest	---	---	---	---	---	-	-
Average	0.000	0.000	0.000	0.000	0.000	-	∞%
Lowest	---	---	---	---	---	-	-

## Water Plant 3 Water Production

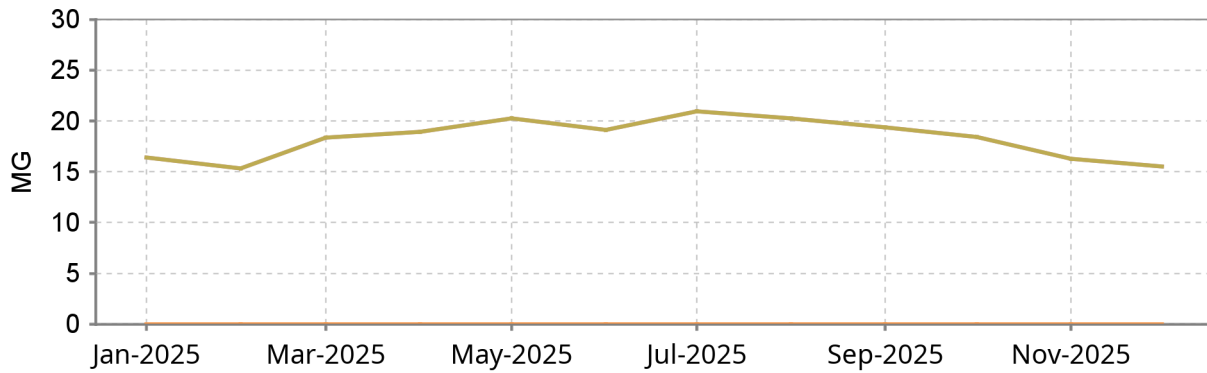
Past 12 Months



Date	WP3 Raw	WP3 Unit 1	WP3 Decant	WP3 Backwash	WP3 Finished	WP3 Process Loss	WP3 Efficiency
Jan, 2025	23.728	24.508	0.000	0.790	23.098	0.630	97%
Feb, 2025	22.587	23.460	0.000	0.816	22.296	0.291	99%
Mar, 2025	29.489	30.039	0.000	0.734	29.025	0.464	98%
Apr, 2025	32.828	33.456	0.000	0.740	32.365	0.463	99%
May, 2025	29.624	30.498	0.000	0.910	29.093	0.531	98%
Jun, 2025	29.157	29.916	0.000	0.748	28.701	0.456	98%
Jul, 2025	2.761	27.328	0.000	0.685	26.354	-23.593	955%
Aug, 2025	0.000	34.100	0.000	0.822	32.716	-32.716	∞%
Sep, 2025	0.000	31.774	0.000	0.755	30.723	-30.723	∞%
Oct, 2025	0.267	32.620	1.095	0.741	31.606	-31.339	11857%
Nov, 2025	0.000	24.799	1.416	0.581	23.063	-23.063	∞%
Dec, 2025	0.000	24.155	2.214	0.854	0.000	0.000	∞%
Total (MG)	170.441	346.654	4.725	9.177	309.040	-138.598	-
Highest	32.828	34.100	2.214	0.910	32.716	-	-
Average	14.203	28.888	0.394	0.765	25.753	-	181%
Lowest	0.000	23.460	0.000	0.581	0.000	-	-

## Waste Water Treatment

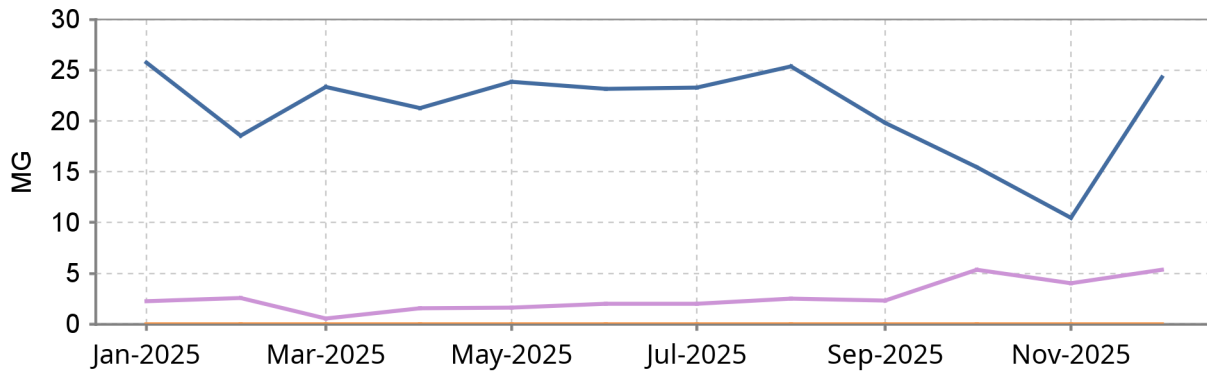
Past 12 Months



Date	WWTP Treated	LVGC Permit	Cedar Breaks Permit	WWTP Permit	Reclaimed Effluent 210A Permit
Jan, 2025	16.439	2.218	25.795	16.440	0.000
Feb, 2025	15.340	2.561	18.584	15.340	0.000
Mar, 2025	18.390	0.539	23.397	18.390	0.000
Apr, 2025	18.953	1.552	21.261	18.952	0.000
May, 2025	20.274	1.594	23.884	20.275	0.000
Jun, 2025	19.140	2.026	23.196	19.140	0.000
Jul, 2025	20.957	1.995	23.339	20.956	0.000
Aug, 2025	20.251	2.483	25.420	20.251	0.000
Sep, 2025	19.392	2.313	19.837	19.392	0.000
Oct, 2025	18.454	5.370	15.485	18.450	0.000
Nov, 2025	16.300	4.014	10.482	16.300	0.000
Dec, 2025	15.498	5.345	24.348	15.502	0.000
Total (MG)	219.388	32.009	255.027	219.388	0.000
Highest	20.957	5.370	25.795	20.956	0.000
Average	18.282	2.667	21.252	18.282	0.000
Lowest	15.340	0.539	10.482	15.340	0.000

## Effluent Disposal

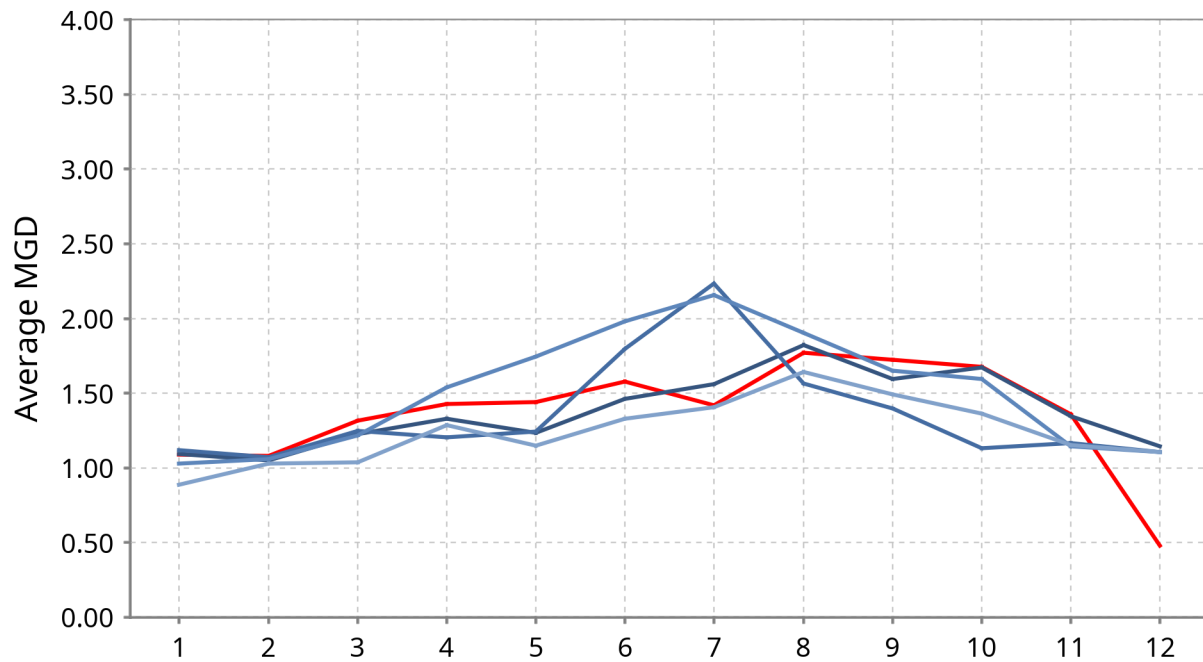
Past 12 Months



Date	LVGC Usage	LVGC Permit	Cedar Brks. Usage	Cedar Brks. Permit	HLGC Usage	Reclaimed E 210A Permit	LVGC Lake Water	HLGC Lake Water
Jan, 2025	2.221	2.218	25.795	25.795	0.000	0.000	0.000	---
Feb, 2025	2.561	2.561	18.584	18.584	0.000	0.000	0.000	---
Mar, 2025	0.539	0.539	23.397	23.397	0.000	0.000	0.000	---
Apr, 2025	1.552	1.552	21.261	21.261	0.000	0.000	0.000	---
May, 2025	1.594	1.594	23.884	23.884	0.000	0.000	0.000	---
Jun, 2025	2.026	2.026	23.196	23.196	0.000	0.000	0.000	---
Jul, 2025	1.995	1.995	23.339	23.339	0.000	0.000	0.000	---
Aug, 2025	2.483	2.483	25.420	25.420	0.000	0.000	0.000	---
Sep, 2025	2.313	2.313	19.837	19.837	0.000	0.000	0.000	---
Oct, 2025	5.370	5.370	15.485	15.485	0.000	0.000	0.000	---
Nov, 2025	4.014	4.014	10.482	10.482	0.000	0.000	0.000	---
Dec, 2025	5.345	5.345	24.348	24.348	0.000	0.000	0.000	---
Total (MG)	32.012	32.009	255.027	255.027	0.000	0.000	0.000	0.000
Highest	5.370	5.370	25.795	25.795	0.000	0.000	0.000	---
Average	2.668	2.667	21.252	21.252	0.000	0.000	0.000	0.000
Lowest	0.539	0.539	10.482	10.482	0.000	0.000	0.000	---

## Combined Water Production

### 5 Year Average Daily Production

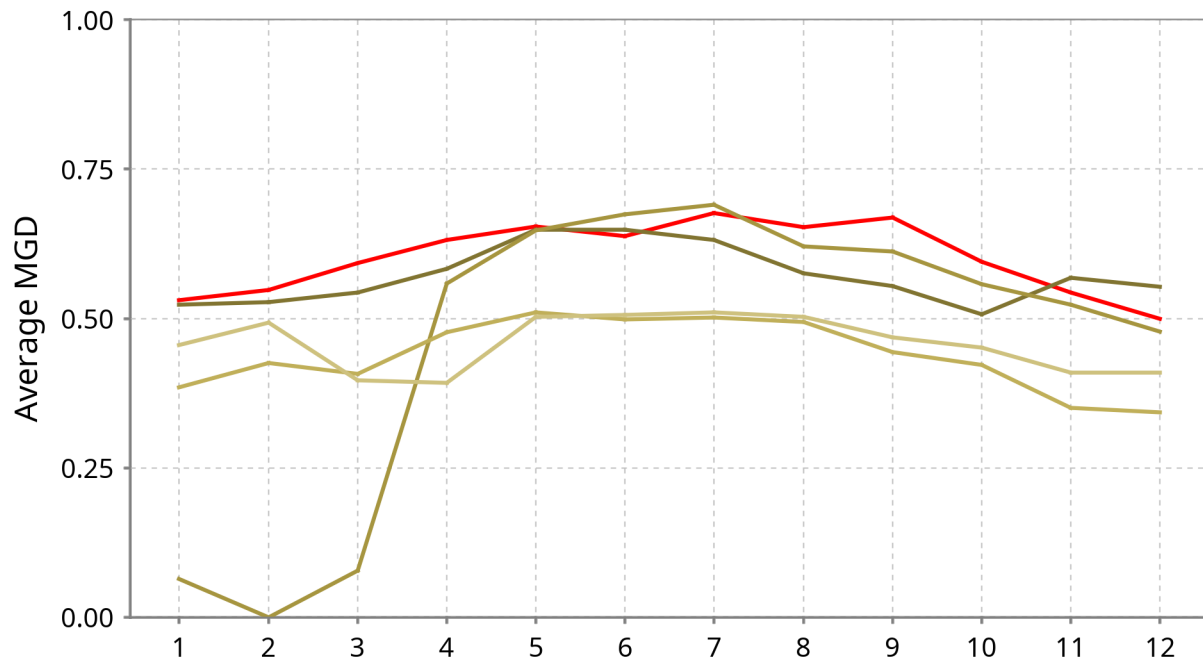


Month	Year - 4	Year - 3	Year - 2	Last Year	This Year
Jan	0.888	1.027	1.118	1.092	1.090
Feb	1.030	1.059	1.073	1.052	1.082
Mar	1.039	1.217	1.246	1.226	1.315
Apr	1.285	1.541	1.205	1.331	1.427
May	1.149	1.744	1.243	1.233	1.440
Jun	1.330	1.982	1.796	1.461	1.576
Jul	1.407	2.158	2.233	1.559	1.417
Aug	1.642	1.905	1.563	1.823	1.772
Sep	1.492	1.652	1.400	1.595	1.724
Oct	1.365	1.594	1.133	1.674	1.676
Nov	1.153	1.144	1.166	1.345	1.358
Dec	1.105	1.108	1.107	1.145	0.479

Highest	1.642	2.158	2.233	1.823	1.772
Average	1.240	1.511	1.357	1.378	1.363
Lowest	0.888	1.027	1.073	1.052	0.479

## Waste Water Treatment

## 5 Year Average Daily Treated



Month	Year - 4	Year - 3	Year - 2	Last Year	This Year
Jan	0.456	0.385	0.064	0.523	0.530
Feb	0.493	0.425	0.000	0.528	0.548
Mar	0.396	0.407	0.078	0.543	0.593
Apr	0.392	0.477	0.559	0.583	0.632
May	0.503	0.511	0.648	0.649	0.654
Jun	0.506	0.499	0.675	0.648	0.638
Jul	0.510	0.502	0.690	0.631	0.676
Aug	0.503	0.494	0.620	0.576	0.653
Sep	0.469	0.443	0.612	0.554	0.669
Oct	0.451	0.422	0.557	0.507	0.595
Nov	0.409	0.351	0.523	0.568	0.543
Dec	0.410	0.343	0.478	0.554	0.500

Highest	0.510	0.511	0.690	0.649	0.676
Average	0.458	0.438	0.459	0.572	0.603
Lowest	0.392	0.343	0.000	0.507	0.500

# Plants Department



### **Plant Operations – December Monthly Report**

During December, the City's water and wastewater treatment systems continued to operate safely and efficiently while staff addressed routine maintenance needs and unexpected system challenges. Facility improvements included repairs to the on-site safety shower, completion of fence cleanup using in-house personnel to reduce costs, irrigation system repairs, and ongoing housekeeping and grounds maintenance.

Both Plant 1 and Plant 3 met production demands throughout the month. Operations were briefly impacted by a distribution line break and periods of elevated raw water turbidity; however, operators made timely adjustments to treatment processes, including chemical feed and filtration controls, to maintain system performance and regulatory compliance. Additional work included equipment repairs, meter troubleshooting, lagoon level reductions, and installation of new water quality analyzers in preparation for future SCADA integration.

Lift station reliability remained a priority, with crews performing preventive and corrective maintenance citywide. Activities included station washouts, sludge removal, probe cleaning, pump and motor repairs, generator diagnostics, electrical troubleshooting, and response to alarms while on call. These efforts ensured uninterrupted wastewater conveyance and system reliability.

Overall, treatment operations remained stable and compliant during the month. Staffing coverage was maintained during employee training and personnel transitions, and all critical systems continued to function as designed.

# Utilities Department



### **Utilities Department – December Monthly Activity Report**

During the reporting period, Utilities staff focused on maintaining system reliability while advancing scheduled infrastructure projects throughout the service area. Routine maintenance activities included fire hydrant inspections, valve testing in preparation for replacements, manhole inspections, smoke testing with associated repairs, plant assistance at Cedar Breaks, and weekly vehicle and equipment maintenance.

Capital and service-related work progressed at multiple locations. Water and sewer service installations remained ongoing at 2503 Patriot Drive, while sewer service work continued at 6709 Alta Vista. Crews also completed sewer service relocations and addressed infrastructure needs at several additional sites as part of system improvements.

Operational response efforts included addressing water leaks and sewer issues across the city. Multiple repairs were successfully completed during the month, including locations on Redbird Drive, Lago Vista Way, La Mesa, Davenport Cove, Constitution Drive, and High Drive. Remaining issues were actively managed and progressed toward completion. Drainage assistance was also provided at 4071 Outpost Trace to support proper stormwater flow and site conditions.

Overall, Utilities staff maintained consistent progress on both routine maintenance and service requests, ensuring continued system functionality and responsiveness to community needs.



# Work Management Requests

## Lago Vista

Date Range: 12/1/2025 - 12/31/2025

Start Date	End Date	Status	Request ID	Type	Sub Type	Assigned To
12/30/2025 12:00 AM	12/30/2025 12:00 AM	In Progress	(WATER LEAK) 5911 LAGO VISTA WAY	Utilities		Henry Noble
12/30/2025 12:00 AM	12/30/2025 12:00 AM	In Progress	(SEWER ISSUE) 6317 LA MESA	Utilities	Sewer Leak	Henry Noble
12/29/2025 12:00 AM	12/29/2025 12:00 AM	In Progress	FH Replacement: Twisting Trail	Utilities	FH Issue/Replacement	Benjamin Moore
12/22/2025 12:00 AM	12/29/2025 12:00 AM	In Progress	(WATER SERVICE INSTALL) 7201 DEEPWOOD DR	Utilities	Other	Luis Mendoza
12/22/2025 12:00 AM	12/22/2025 12:00 AM	In Progress	(WATER LEAK) 6709 ALTA VISTA	Utilities	Water Leak	Benjamin Moore
12/22/2025 12:00 AM	12/29/2025 12:00 AM	In Progress	(SEWER SERVICE INSTALL) 7201 DEEPWOOD DR	Utilities	Other	Luis Mendoza
12/2/2025 12:00 AM	12/4/2025 12:00 AM	In Progress	TRUCK # 6006 (OIL CHANGE NEEDED)	Utilities	Other	Joel Peer
				Total	7	



# Work Management Requests

Lago Vista

Date Range: 12/1/2025 - 12/31/2025

Start Date	End Date	Status	Request ID	Type	Sub Type	Assigned To
12/23/2025 12:00 AM	12/23/2025 12:00 AM	Complete	(WATER LEAK) 22017 REDBIRD DR	Utilities	Water Leak	Joseth Castro
12/10/2025 12:00 AM	12/10/2025 12:00 AM	Complete	(SEWER SERVICE INSTALL) 21679 HIGH DR	Utilities	Other	Benjamin Moore
12/8/2025 12:00 AM	12/9/2025 12:00 AM	Complete	(SEWER SERVICE INSTALL) 4102 CONSTITUTION DR	Utilities	Other	Luis Mendoza
12/3/2025 12:00 AM	12/8/2025 12:00 AM	Complete	TRUCK # 6021 (CHECK HEADLIGHT FUNCTION)	Utilities	Other	Joseth Castro
				Total	4	



# Fleet Events By Date Range

Lago Vista

Date Range: 12/1/2025 - 12/31/2025

**Date:** 12/22/2025 **Status:** Complete **Assigned To:** Joel Peer

**Event ID:** 8400 **Event Type:** Maintenance **Work Order ID:**

**Feature ID:** 2022 Chevrolet Utility Truck **Feature Class:** Fleet Unit **Fee:**

**Note:** removed and replaced fuel filter and installed new wiper blades

**Date:** 12/10/2025 **Status:** Complete **Assigned To:** Joel Peer

**Event ID:** sullar air comp **Event Type:** Maintenance **Work Order ID:**

**Feature ID:** Sullar ( new compressor) **Feature Class:** Fleet Unit **Fee:**

**Note:** removed and replaced dead battery with fresh new battery from napa.

**Date:** 12/2/2025 **Status:** Complete **Assigned To:** Joel Peer

**Event ID:** 7019 **Event Type:** Maintenance **Work Order ID:**

**Feature ID:** Chevy 2500 Pickup **Feature Class:** Fleet Unit **Fee:**

**Note:** removed and replaced driver side hub bearing assembly.

**Date:** 12/2/2025 **Status:** Complete **Assigned To:** Joel Peer

**Event ID:** 3009 **Event Type:** Other **Work Order ID:**

**Feature ID:** Ford XLF250 Pickup **Feature Class:** Fleet Unit **Fee:**

**Note:** removed old battery and replaced it with new one. also removed decals for new decals to be installed.

**Date:** 12/22/2025 **Status:** Complete **Assigned To:** Joel Peer

**Event ID:** 7014 **Event Type:** Other **Work Order ID:**

**Feature ID:** Ford F250 Pickup **Feature Class:** Fleet Unit **Fee:**

**Note:** remounted and succured driver side tool box with new mounting hardware

**Date:** 12/22/2025 **Status:** Complete **Assigned To:** Joel Peer

**Event ID:** 1583 **Event Type:** Maintenance **Work Order ID:**

**Feature ID:** Magnum Trailer - Gooseneck (Black, Newer) **Feature Class:** Fleet Unit **Fee:**

**Note:** Patched tire due to nail in rear outer right.

**Date:** 12/10/2025      **Status:** Complete      **Assigned To:** Joel Peer  
**Event ID:** 3007      **Event Type:** Maintenance      **Work Order ID:**  
**Feature ID:** Chevy 2500 Silverado      **Feature Class:** Fleet Unit      **Fee:**  
**Note:** removed and replaced old dead battery with new battery. from napa

**Date:** 12/18/2025      **Status:** Complete      **Assigned To:** Joseth Castro  
**Event ID:** 1581      **Event Type:** Other      **Work Order ID:**  
**Feature ID:** Crane Truck ( PLANTS)      **Feature Class:** Fleet Unit      **Fee:**  
**Note:** Replaced Starter solenoid, due to fuse box falling off mount and getting wet. Remounted and secured fuse box.

**Date:** 12/4/2025      **Status:** Complete      **Assigned To:** Joseth Castro  
**Event ID:** 1578      **Event Type:** Other      **Work Order ID:**  
**Feature ID:** Kubota RTV1100      **Feature Class:** Fleet Unit      **Fee:**  
**Note:** Repaired fuel tank due to puncture from stick. Used plastic JB weld to patch.

**Date:** 12/4/2025      **Status:** Complete      **Assigned To:** Joseth Castro  
**Event ID:** 1570      **Event Type:** Service      **Work Order ID:**  
**Feature ID:** Case Loader/Tractor Articulated 621E      **Feature Class:** Fleet Unit      **Fee:**  
**Note:** Replaced x2 batteries due to hard start

**Date:** 12/18/2025      **Status:** Complete      **Assigned To:** Joseth Castro  
**Event ID:** 1582      **Event Type:** Maintenance      **Work Order ID:**  
**Feature ID:** Case TR270B Compact Track Loader      **Feature Class:** Fleet Unit      **Fee:**  
**Note:** Greaced skid steer and grapple bucket.

**Date:** 12/4/2025      **Status:** Complete      **Assigned To:** Joseth Castro  
**Event ID:** 1571      **Event Type:** Maintenance      **Work Order ID:**  
**Feature ID:** Case Loader/Tractor Articulated 621E      **Feature Class:** Fleet Unit      **Fee:**  
**Note:** Replaced x2 batteries due to hard start

**Date:** 12/4/2025      **Status:** Complete      **Assigned To:** Joseth Castro  
**Event ID:** 1569      **Event Type:** Other      **Work Order ID:**  
**Feature ID:** john deere #2      **Feature Class:** Fleet Unit      **Fee:**  
**Note:** Replaced wiring harness that unlocks bucket

**Date:** 12/11/2025      **Status:** Complete      **Assigned To:** Joseth Castro  
**Event ID:** 1576      **Event Type:** Other      **Work Order ID:**  
**Feature ID:** Morbark Chipper      **Feature Class:** Fleet Unit      **Fee:**  
**Note:** Drained and replaced hydraulic fluid.

<b>Date:</b> 12/16/2025	<b>Status:</b> Complete	<b>Assigned To:</b> Joseth Castro
<b>Event ID:</b> 1575	<b>Event Type:</b> Other	<b>Work Order ID:</b>
<b>Feature ID:</b> Morbark Chipper	<b>Feature Class:</b> Fleet Unit	<b>Fee:</b>
<b>Note:</b> Relaced ignition due to unit shutting off at high RPM. Ignition was cutting power due to the vibrations at high rpm.		
<b>Date:</b> 12/8/2025	<b>Status:</b> Complete	<b>Assigned To:</b> Joseth Castro
<b>Event ID:</b> 1577	<b>Event Type:</b> Other	<b>Work Order ID:</b>
<b>Feature ID:</b> 2500hd chevy	<b>Feature Class:</b> Fleet Unit	<b>Fee:</b>
<b>Note:</b> Installed and mounted 100gal fuel tank in the bed of the truck.		
<b>Date:</b> 12/29/2025	<b>Status:</b> Complete	<b>Assigned To:</b> Joseth Castro
<b>Event ID:</b> 1585	<b>Event Type:</b> Other	<b>Work Order ID:</b>
<b>Feature ID:</b> 2500hd chevy	<b>Feature Class:</b> Fleet Unit	<b>Fee:</b>
<b>Note:</b> Installed Camera & GPS / Carl		
<b>Date:</b> 12/30/2025	<b>Status:</b> Complete	<b>Assigned To:</b> Joseth Castro
<b>Event ID:</b> 1203	<b>Event Type:</b> Other	<b>Work Order ID:</b>
<b>Feature ID:</b> Chevy(parks & rec)	<b>Feature Class:</b> Fleet Unit	<b>Fee:</b>
<b>Note:</b> installed new camera and gps under the dash		
<b>Date:</b> 12/17/2025	<b>Status:</b> Complete	<b>Assigned To:</b> Joseth Castro
<b>Event ID:</b> 1574	<b>Event Type:</b> Other	<b>Work Order ID:</b>
<b>Feature ID:</b> Case Backhoe 580N	<b>Feature Class:</b> Fleet Unit	<b>Fee:</b>
<b>Note:</b> Replaced diesel cooling coil, due to smashed fins.		
<b>Date:</b> 12/18/2025	<b>Status:</b> Complete	<b>Assigned To:</b> Joseth Castro
<b>Event ID:</b> 1580	<b>Event Type:</b> Other	<b>Work Order ID:</b>
<b>Feature ID:</b> Kubota RTV1100	<b>Feature Class:</b> Fleet Unit	<b>Fee:</b>
<b>Note:</b> Replaced battery		
<b>Date:</b> 12/29/2025	<b>Status:</b> Complete	<b>Assigned To:</b> Joseth Castro
<b>Event ID:</b> 1584	<b>Event Type:</b> Other	<b>Work Order ID:</b>
<b>Feature ID:</b> Ford Ranger	<b>Feature Class:</b> Fleet Unit	<b>Fee:</b>
<b>Note:</b> Installed Camera & GPS		
<b>Date:</b> 12/8/2025	<b>Status:</b> Complete	<b>Assigned To:</b> Joseth Castro
<b>Event ID:</b> Battery replacment	<b>Event Type:</b> Maintenance	<b>Work Order ID:</b>
<b>Feature ID:</b> Ford F250	<b>Feature Class:</b> Fleet Unit	<b>Fee:</b>
<b>Note:</b> Replacded battery		
<b>Total</b>		22

# **Streets Department**



# Work Management Requests

## Lago Vista

Date Range: 12/1/2025 - 12/31/2025

Start Date	End Date	Status	Request ID	Type	Sub Type	Assigned To
12/17/2025 12:00 AM	12/18/2025 12:00 AM	Complete	Tree Trimming	Streets	Trimming & Mowing	Ulysses Gruver
12/16/2025 12:00 AM	12/16/2025 12:00 AM	Complete	City Hall pk sign	Streets	Signs	Ulysses Gruver
12/15/2025 12:00 AM	12/16/2025 12:00 AM	Complete	Tree trimming	Streets	Trimming & Mowing	Gregg Meredith
12/15/2025 12:00 AM	12/15/2025 12:00 AM	Complete	Deer pick up	Streets	Deer Removal	Gregg Meredith
12/15/2025 12:00 AM	12/15/2025 12:00 AM	Complete	Down stop sign	Streets	Signs	Gregg Meredith
12/15/2025 12:00 AM	12/18/2025 12:00 AM	Complete	Mowing	Streets	Trimming & Mowing	Gregg Meredith
12/11/2025 12:00 AM	12/11/2025 12:00 AM	Complete	Maintenance	Streets	Other	Gregg Meredith
12/10/2025 12:00 AM	12/10/2025 12:00 AM	Complete	Tree trimming	Streets	Trimming & Mowing	Ulysses Gruver
12/9/2025 12:00 AM	12/9/2025 12:00 AM	Complete	Tree trimming	Streets	Trimming & Mowing	Ulysses Gruver
12/8/2025 12:00 AM	12/8/2025 12:00 AM	Complete	Tree trimming	Streets	Trimming & Mowing	Ulysses Gruver
12/8/2025 12:00 AM	12/18/2025 12:00 AM	Complete	Chipping	Streets	Other	Gregg Meredith
12/4/2025 12:00 AM	12/4/2025 12:00 AM	Complete	Green center	Streets	Other	Gregg Meredith
12/2/2025 12:00 AM	12/3/2025 12:00 AM	Complete	Chipping	Streets	Trimming & Mowing	Gregg Meredith
12/1/2025 12:00 AM	12/1/2025 12:00 AM	Complete	Christmas tree lighting	Streets	Other	Gregg Meredith
				Total	14	

# CIP

## Projects



## **CIP Monthly Report**

### **Wastewater Treatment Plant (WWTP) Expansion**

The 30% design documents are currently on hold pending revisions to the project scope. The city is coordinating with KPA Engineering to conduct a third-party review of the structural components of the existing plant.

### **Lift Station Rehabilitation**

The project remains in the design phase, which includes preliminary design coordination and surveying efforts for each lift station.

### **Golf Course Irrigation**

The 100% design drawings and specifications have been submitted, and the project is out for bid. The bid due date has been extended to Tuesday January 13 to allow bidder more time due to the holidays.

### **Effluent Pond**

Pond #2 has been completed and accepted by the city. Pond #17 reconstruction will be placed on hold until the golf course irrigation is completed.

### **Citywide Drainage Study**

A preliminary drainage study is underway in partnership with Freese and Nichols. City staff have identified key locations experiencing stormwater issues and provided this information to the consultant. Staff are currently awaiting a proposal and cost estimate from Freese and Nichols to proceed with the study.